

Erratum

to

**Transbilayer effects of raft-like lipid domains in asymmetric planar bilayers
measured by single molecule tracking**

by

Volker Kiessling, Jonathan M. Crane, and Lukas K. Tamm

published in

Biophysical Journal 91:3313-3326 (2006)

Figure 3 published in this paper was incorrect. The correct figure appears below. The published figure legend was correct and applies to the new figure. Panel B of the incorrectly published figure shows bilayers made from POPC instead of bilayers made from bPC, bPE, bPC, and cholesterol in the vesicle-derived top leaflet.

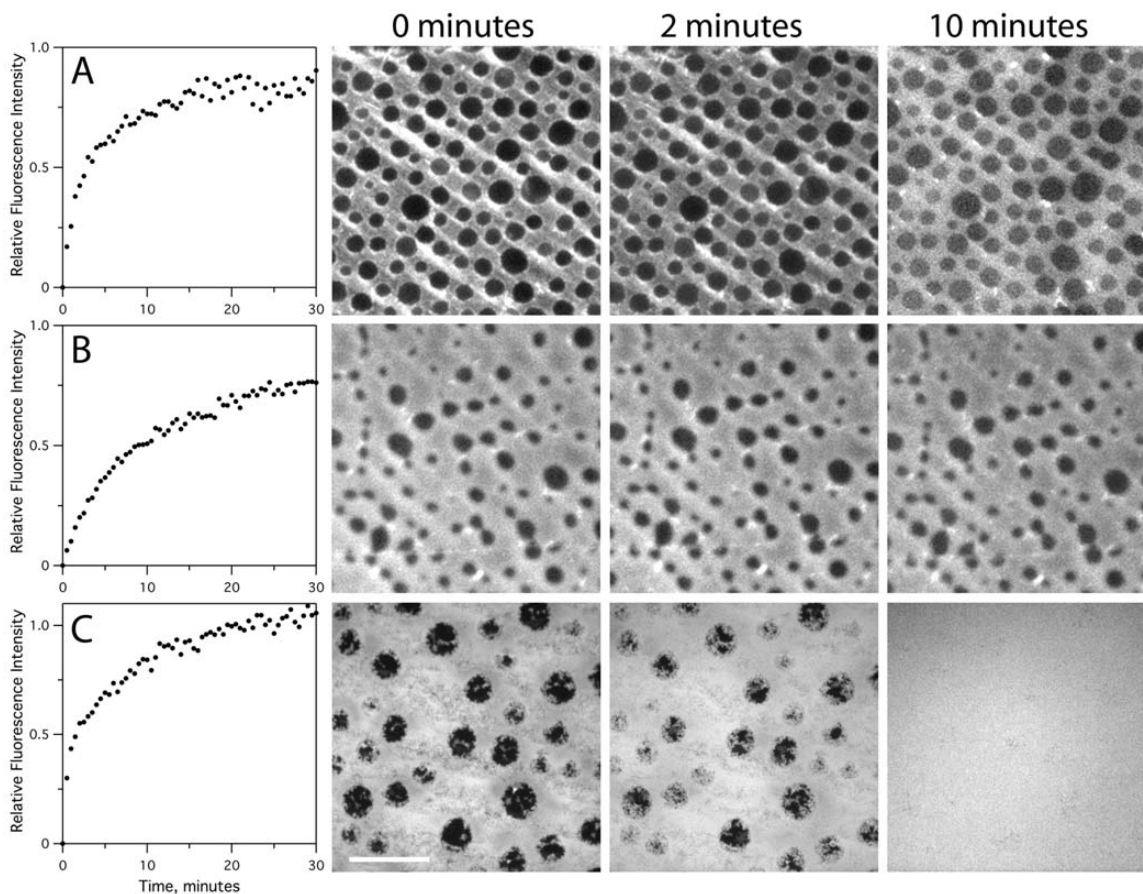


Figure 3. Formation of planar supported bilayers containing asymmetric l_o phase domains. Bilayers were made by the LB/VF technique at room temperature. The LB monolayer was composed of bPC/bSM/cholesterol (2:2:1) + 3% DPS (A and B), or without DPS (C). The vesicles contained either POPC + 20% cholesterol (A), bPC, bPE, bPS, and cholesterol (B), or POPC only (C). Formation of the bilayer was monitored by TIRFM with 0.5% Rh-DPPE added to the vesicles only (panels on the left). The stability of the LB monolayer during incubation with vesicles was examined by imaging with 0.5% Rh-DPPE added to the LB monolayer only (micrographs on the right). The white bar represents 20 μm .